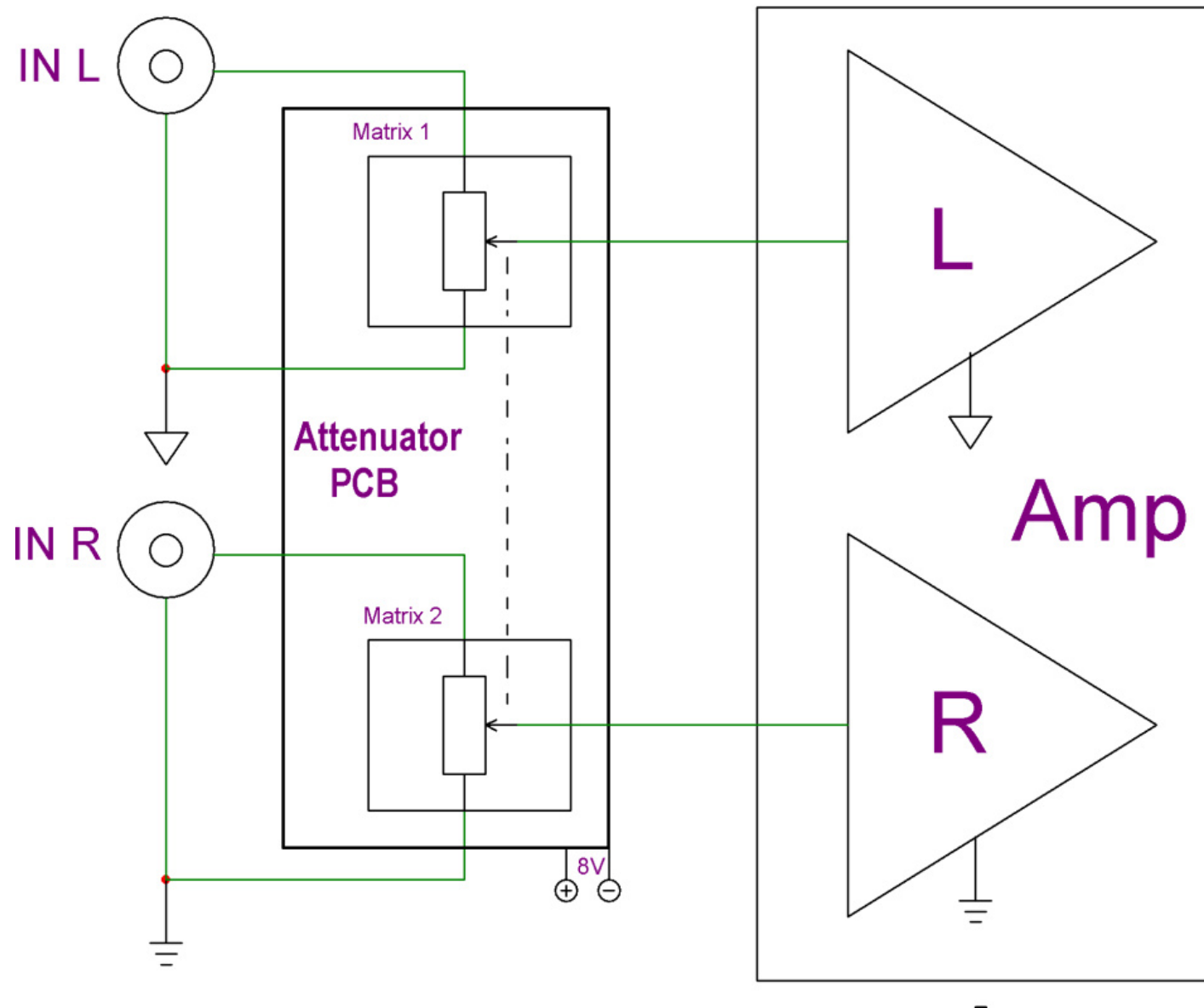
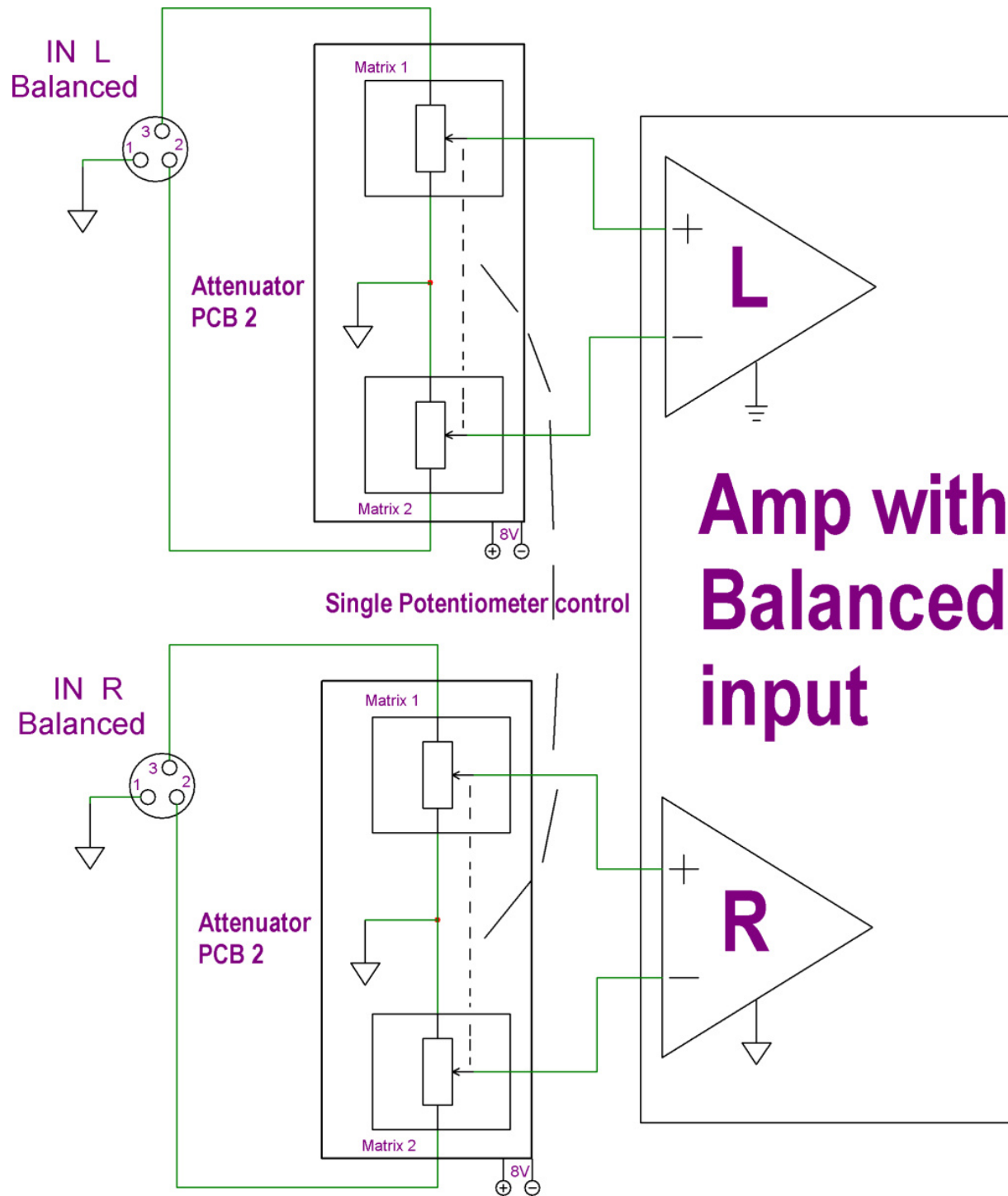


Matrix Attenuator Applications

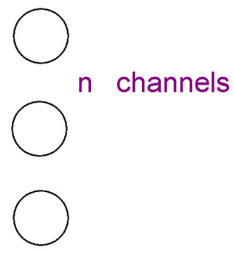
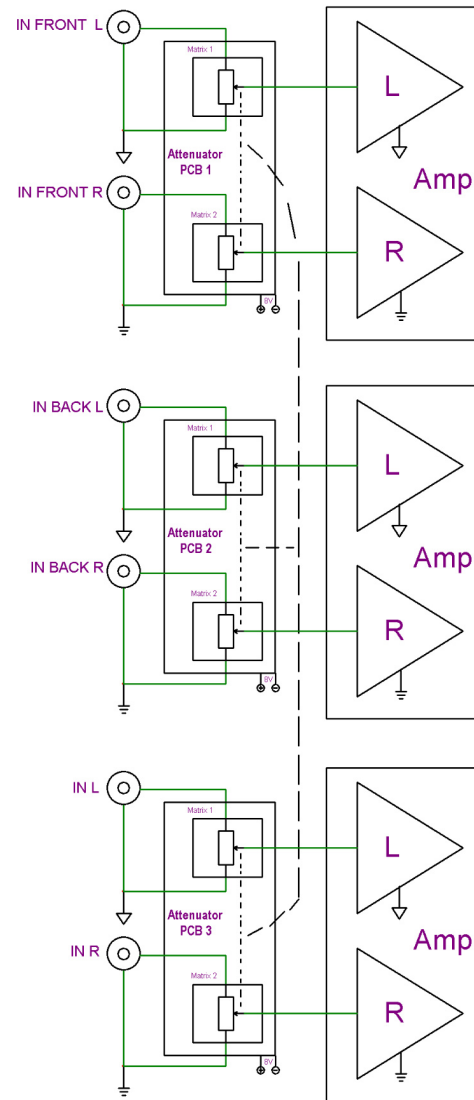
Single Ended

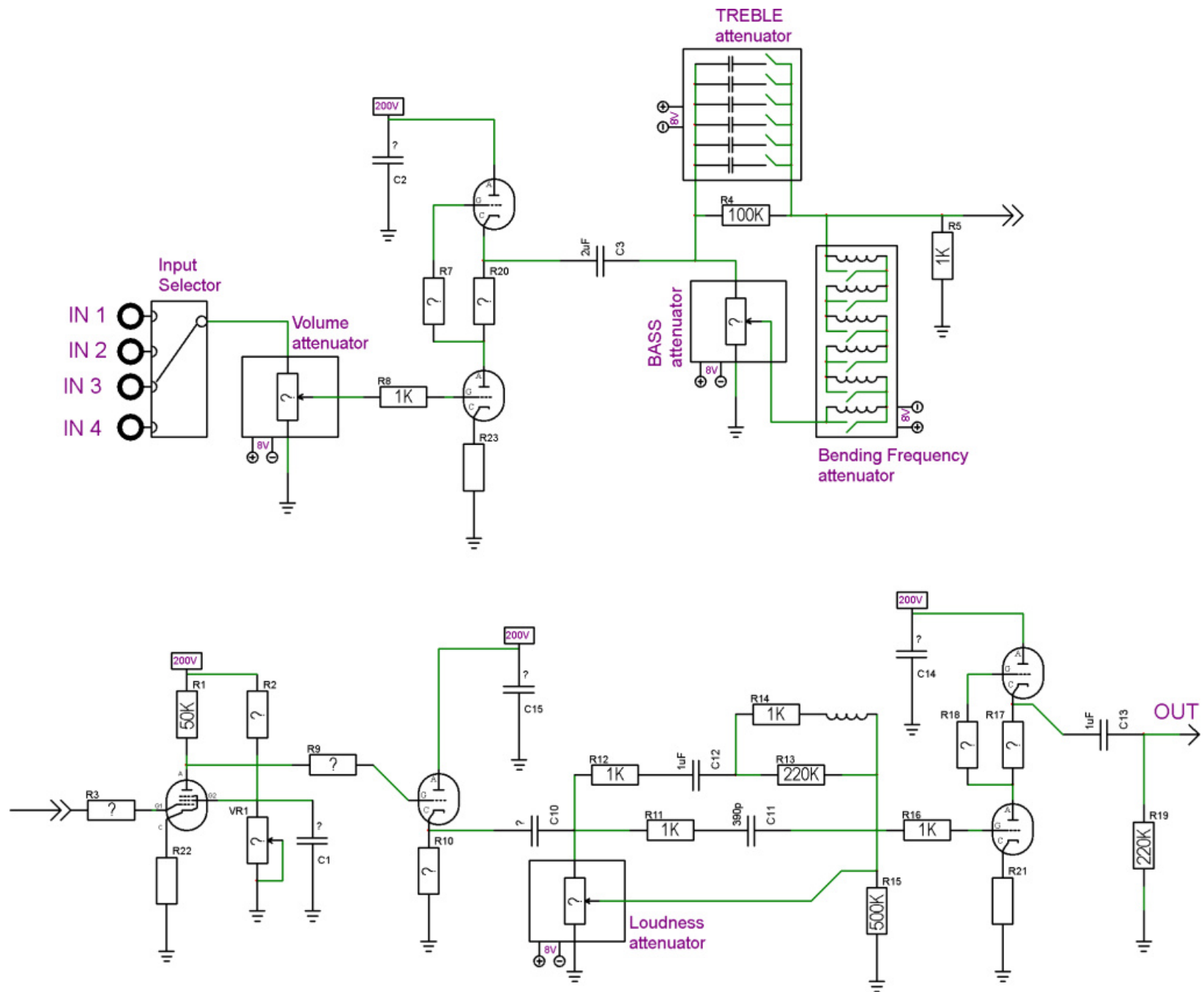




Surround / Home Theater / multichannel systems

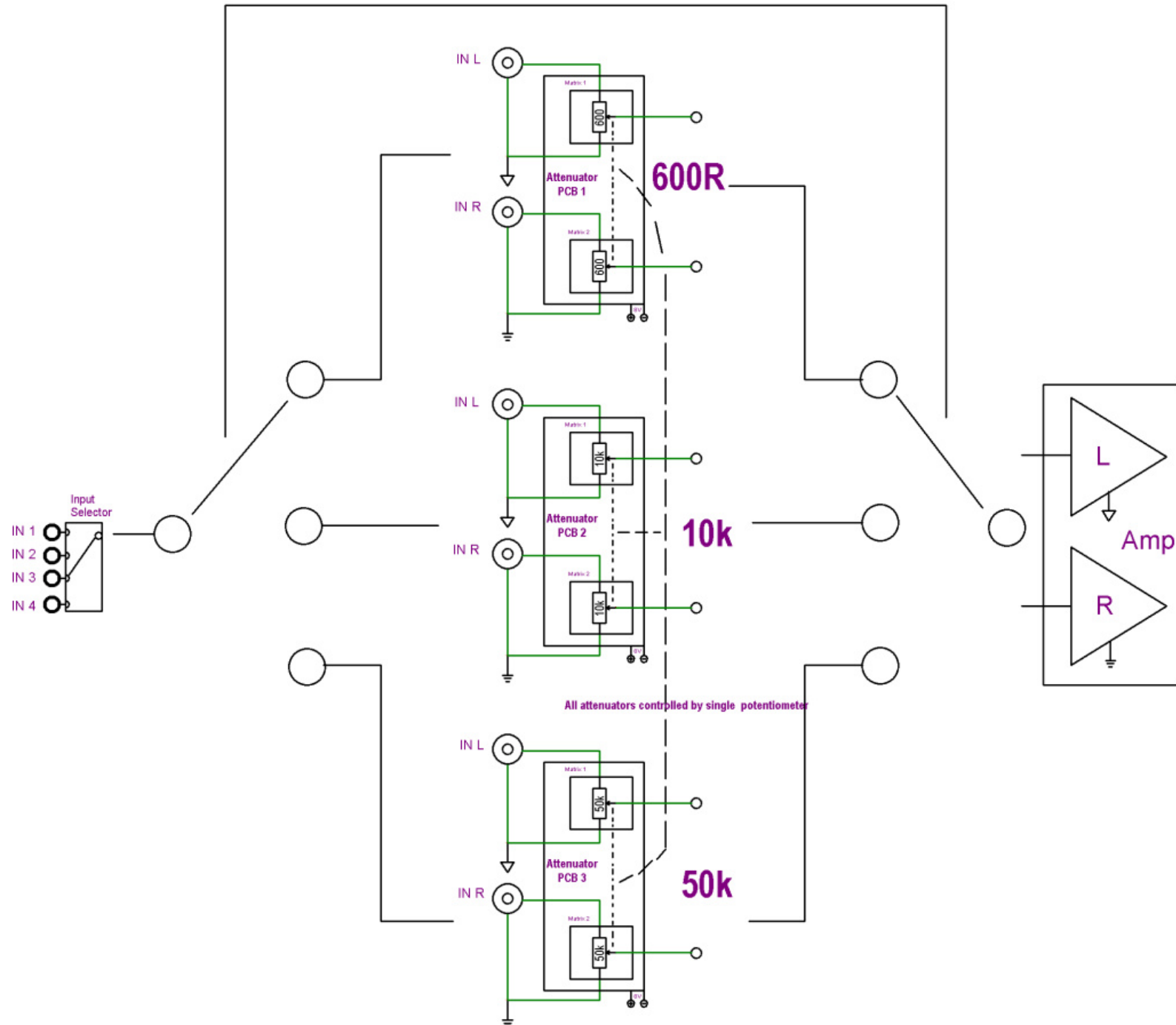
All attenuators controlled by single potentiometer

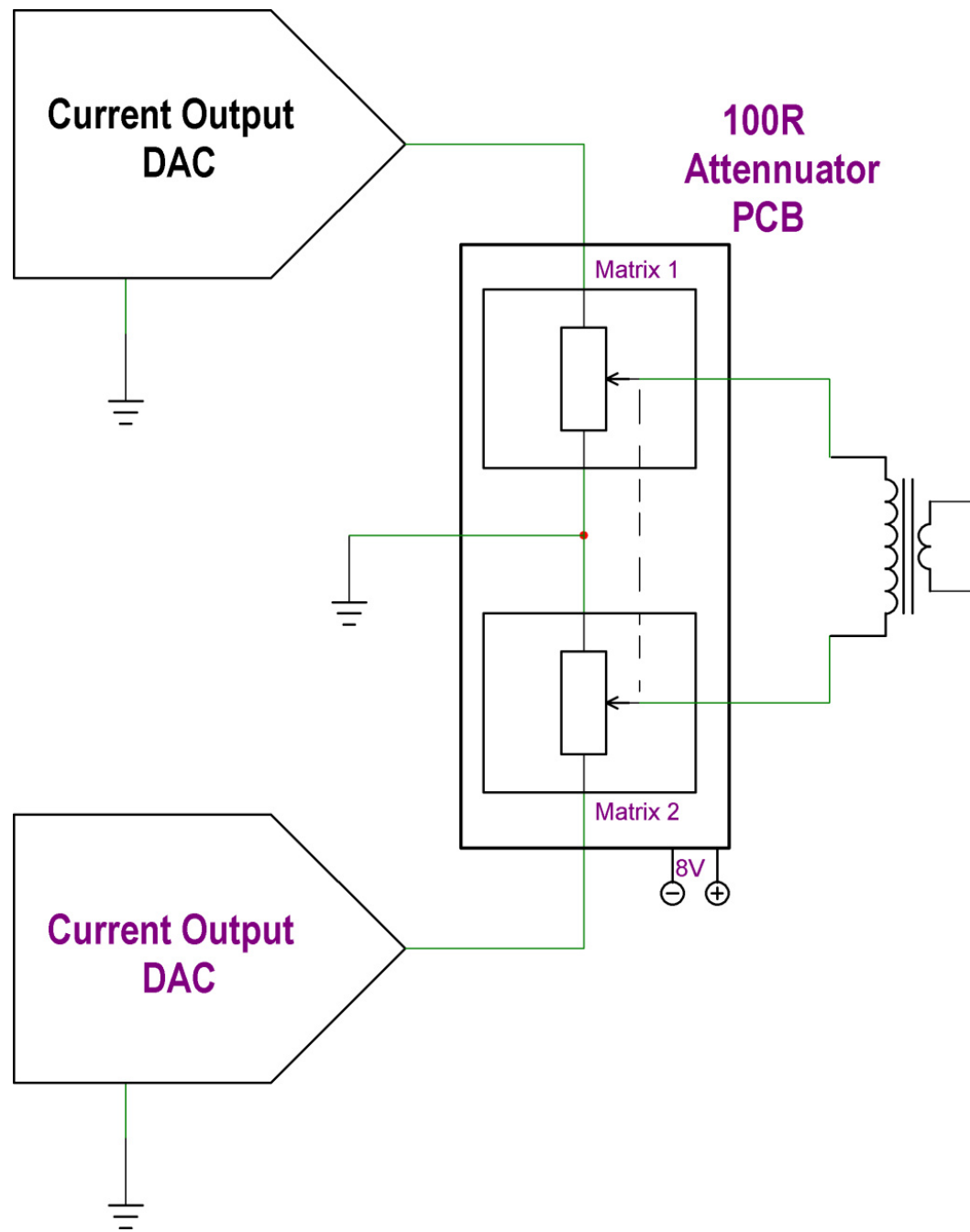




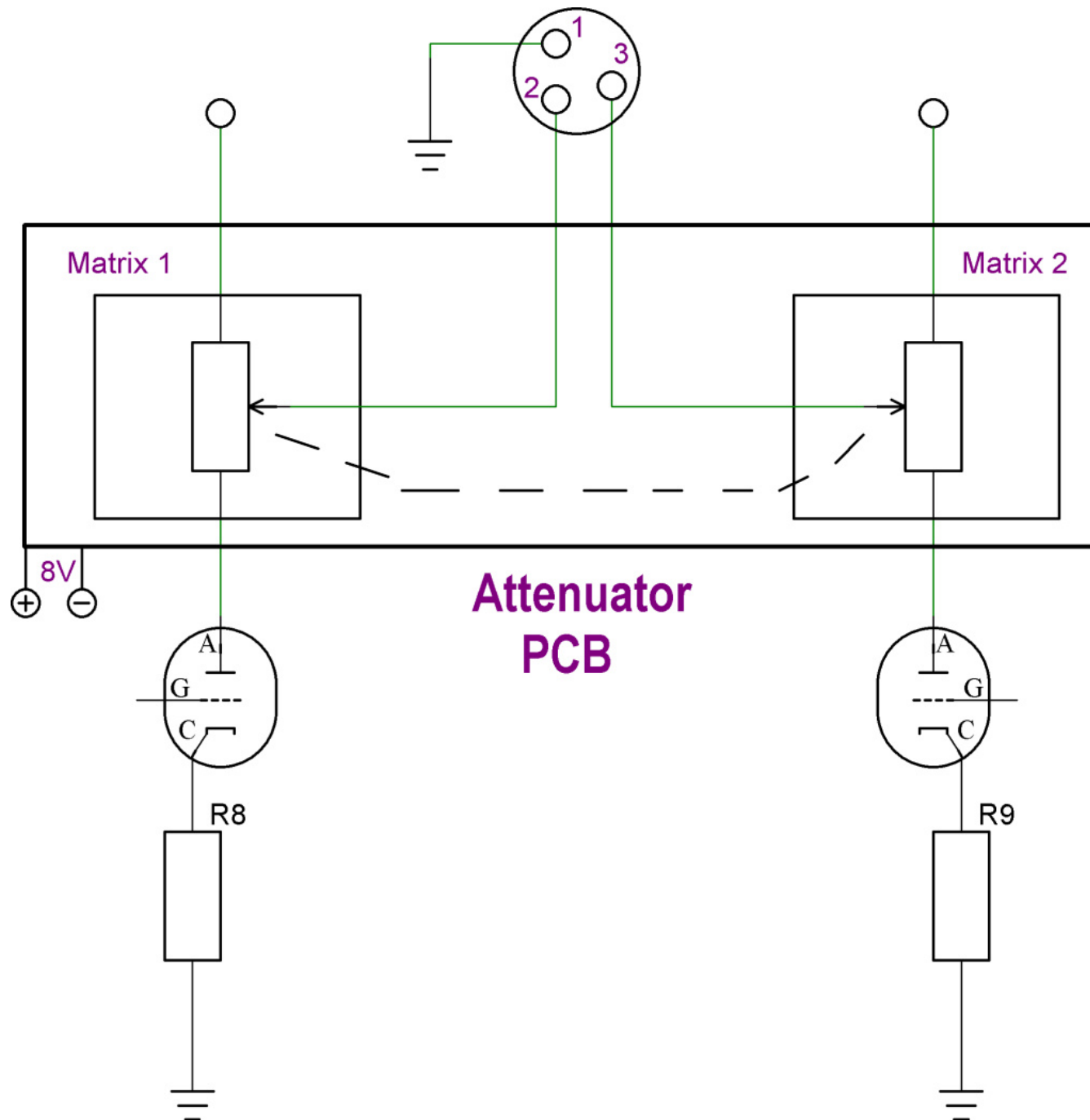
TUBE Preampflier with volume, bass,treble and loudness control

Input Impedance Selector

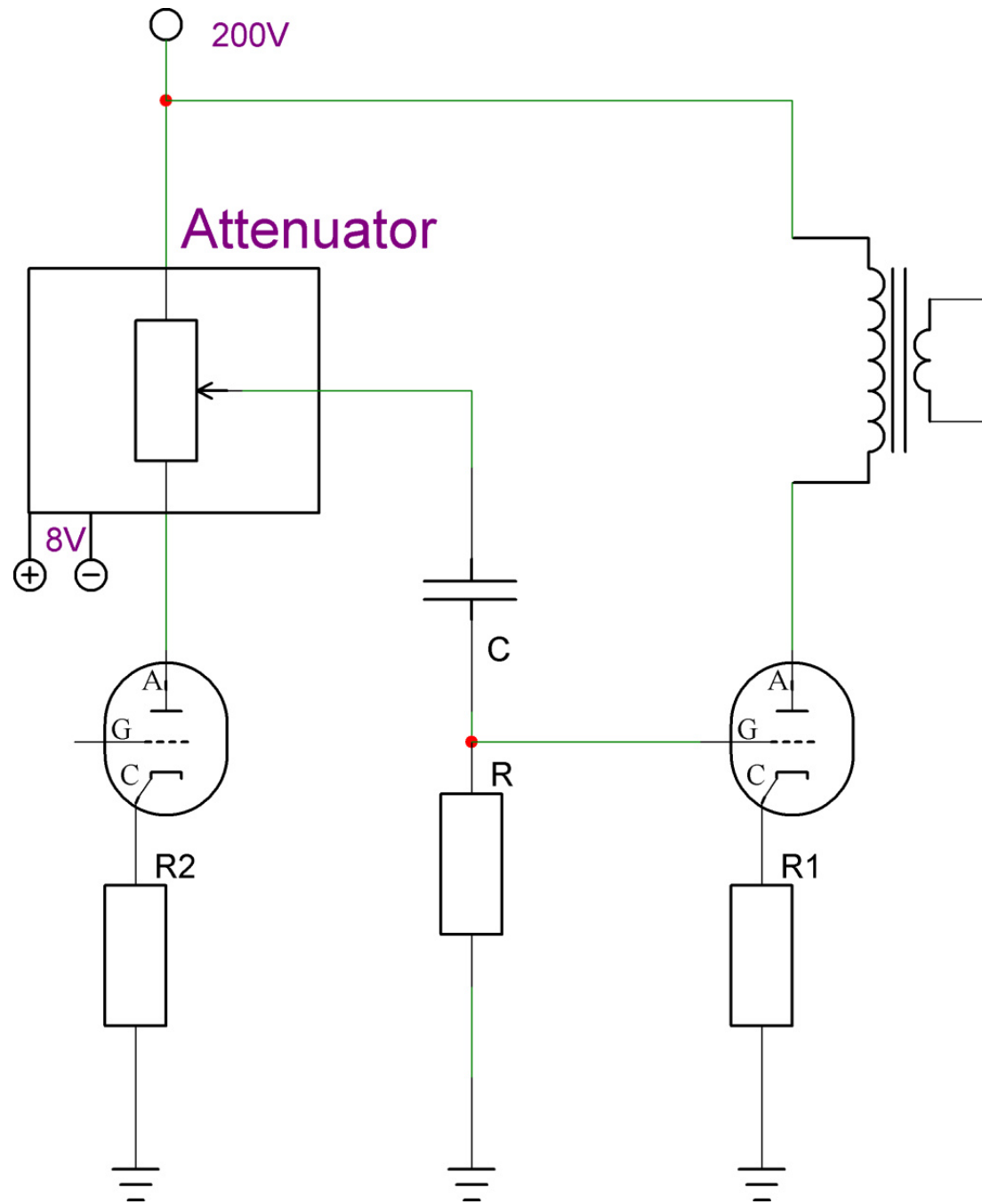




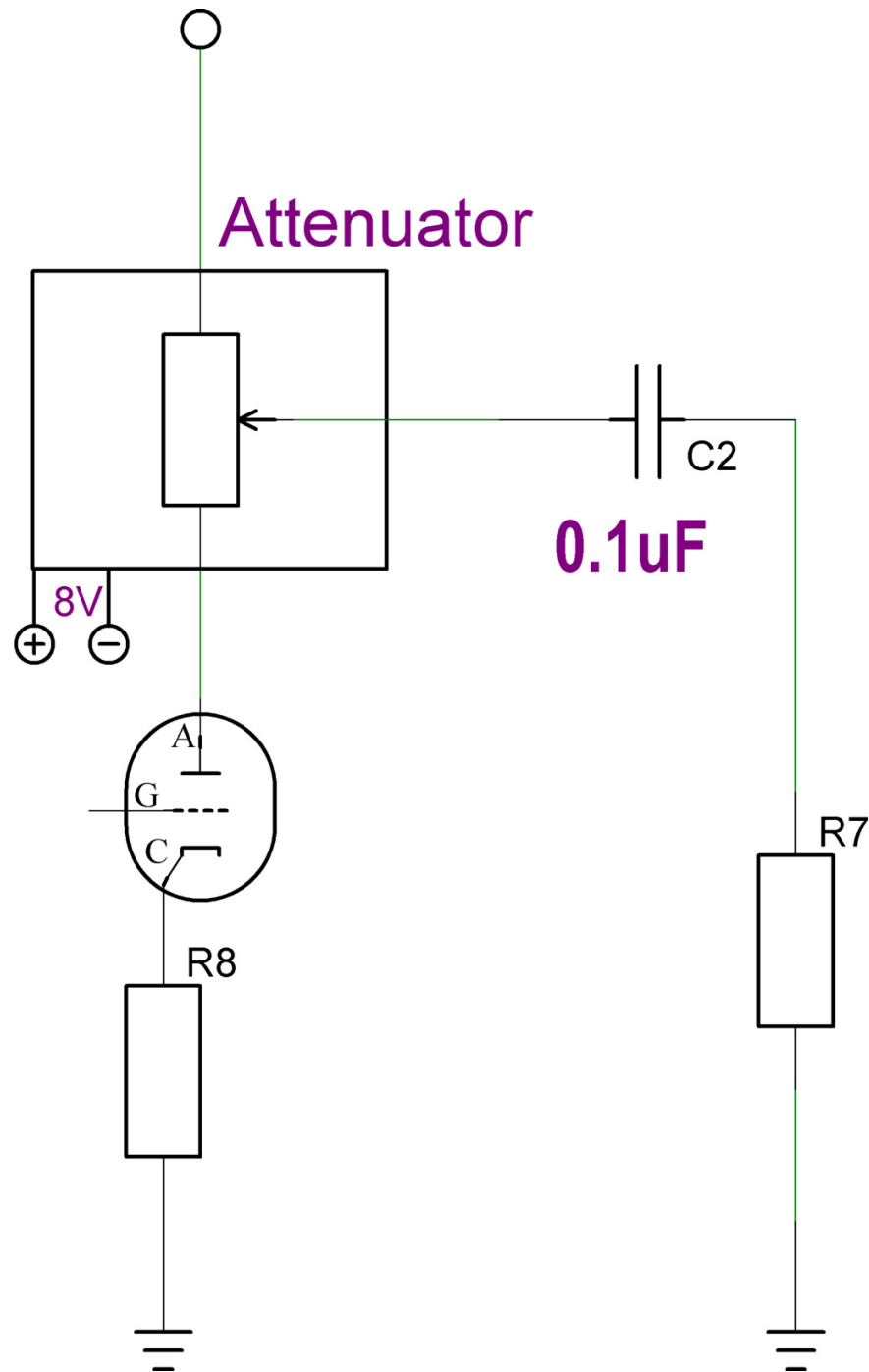
Balanced load and attenuation for
current output DAC



Balanced Attenuated output



Variation of Anode resistor eliminates input attenuation element



Variation of preamplifier's amplification using anode resistor